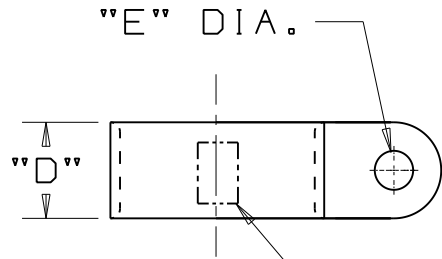
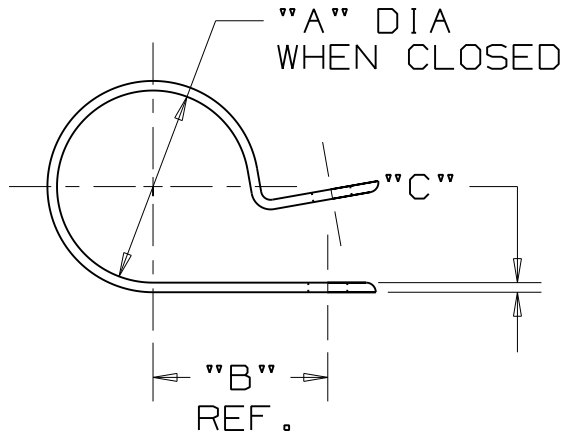


THIS COPY IS PROVIDED ON A RESTRICTED BASIS AND IS NOT TO BE USED IN ANY WAY DETRIMENTAL TO THE INTERESTS OF PANDUIT CORP.



FRACTIONAL PART SIZE NOTED HERE.

*PANDUIT PART NUMBER	"A" in/(mm)	"B" REF. in/(mm)	"C" in/(mm)	"D" in/(mm)	"E" in/(mm)	WEIGHT lbs (g) / 100 pcs
CCS12-S8	0.12 (3.1)	0.33 (8.4)	0.050 (1.3)	0.37 (9.4)	0.167 (4.2)	0.09 (40.2)
CCS19-S8	0.19 (4.8)	0.43 (10.9)	0.050 (1.3)	0.37 (9.4)	0.167 (4.2)	0.11 (49.3)
CCS25-S8	0.25 (6.3)	0.41 (10.4)	0.050 (1.3)	0.37 (9.4)	0.167 (4.2)	0.13 (57.9)
CCS25-S10	0.25 (6.3)	0.41 (10.4)	0.050 (1.3)	0.37 (9.4)	0.203 (5.1)	0.12 (52.0)
CCS31-S8	0.31 (7.9)	0.49 (12.4)	0.050 (1.3)	0.37 (9.4)	0.167 (4.2)	0.14 (62.3)
CCS38-S8	0.38 (9.5)	0.59 (15.0)	0.050 (1.3)	0.37 (9.4)	0.167 (4.2)	0.16 (70.7)
CCS44-S8	0.44 (11.1)	0.57 (14.5)	0.050 (1.3)	0.37 (9.4)	0.167 (4.2)	0.17 (77.0)
CCS50-S8	0.50 (12.7)	0.60 (15.2)	0.050 (1.3)	0.37 (9.4)	0.167 (4.2)	0.18 (80.0)



FULL RADIUS ALL AROUND

NOTES:

- \*1. SEE CURRENT PRICE SHEET FOR PART NUMBER SUFFIX DESIGNATION FOR PACKAGE SIZE AND PART COLOR.

(DIMENSIONS IN PARENTHESES ARE IN METRIC.)

CAD FILENAME/LAYERS: G00239DV\_PB\_CCS\_02

**PANDUIT** CORP. TINLEY PARK, ILLINOIS

CCS - CABLE CLAMP

UNLESS OTHERWISE SPECIFIED, DIMENSIONAL TOLERANCES ARE:  
 (.X) ± 0.1(2.5) (.XXX) ± 0.015(.4)  
 (.XX) ± 0.05(1.3) ANGLES ± 5°

UNLESS OTHERWISE SPECIFIED, ALL DIMENSIONS ARE GIVEN IN INCHES, THIRD ANGLE PROJECTION.

REV	DATE	BY	CHK	DESCRIPTION	ECN	R	CUST	SUP	DRAWN BY	MAT'L:	SCALE	DWG NO.	DWG SIZE
2	2/7/06	Jod		UPDATE LOCATION FOR FRACTIONAL PART SIZE INDICATOR	GB0239DV	2			CJG	NYLON 6/6	NONE	GB0239DV	A
									DATE				
									6/26/96				
									CHK'D				